



# WELCOME



The Bethlehem Soccer Club is pleased to invite you to our 25th Annual Bethlehem Soccer Tournament. Presented By **STANNO**

This year's 3-day tournament will be held at the

## Bethlehem SoccerPlex

**Friday, May 14, 2010**  
**4:00pm-10:00pm,**

**Saturday, May 15, 2010**  
**8:00am-6:00pm**  
&

**Sunday, May 16, 2010**  
**8 am to 6 pm**

*Bethlehem SoccerPlex is home to well groomed fields, enhanced parking, a picnic pavilion, and a concession stand located onsite. Our first tournament (Bethlehem Friendship Soccer Tournament) was held Sept. 1986*



*\*Please note:  
To ensure field hygiene,  
pets are not allowed  
on the grounds.\**



450 Wemple Road, Glenmont NY 12077  
E-mail: [soccer@brwhitman.com](mailto:soccer@brwhitman.com)

Visit our Website at:  
[www.bethlehemsoccerny.org](http://www.bethlehemsoccerny.org)



### Directions

#### From North, East & West:

Take NYS Thruway to Exit 23 (Albany). Take first ramp after tollbooth, turning right onto Rt.9W So. Follow Rt.9W South for about 4 miles to Wemple Road (*through Glenmont - past Wal-Mart, Price Chopper, Mobil Station and the intersection of 9W & Feura Bush Rd. - just stay on Rt. 9W south*). At the next stoplight, cross-section of Rt.9W & Wemple Rd., turn left onto Wemple Rd. The SoccerPlex is 0.5 mile on the left.

#### From South, East & West:

Take NYS Thruway North to Exit 22 (Selkirk). Take Rt.144 North for 2.9 miles. Take left onto Wemple Road. Go 1.3 miles to the SoccerPlex.



# 25<sup>th</sup> Annual Bethlehem



## Soccer Tournament

Presented By **STANNO**

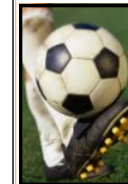
**May 14 - 16, 2010**  
**U8 - U19 / Boys & Girls**  
**A & B Divisions**



**COME & ENJOY**  
**Tournament Games**

**Shootouts**

**Speed Gun - 50/50 Raffle**  
**Mr. Bounce - Refreshments**  
**Convenient Parking**  
**Friendly Competition**





# DIVISIONS

U8 - U19

Boys & Girls

A & B Divisions

## Division Specifics

U8 - Experienced/Inexperienced

U10 - 6 v 6 - U12 - 8 v 8

U14-U19 - 11 v 11

## Game lengths:

U8-U12 - (4) 25 minute games

U14 - (3) 40 minute games

U16-U19 A - (3) 55 minute games

U16-U19 B - (3) 40 minute games

## Awards

**Participation Trophies:**  
awarded to all U8 & U10 teams.



Trophies awarded 1<sup>st</sup> & 2<sup>nd</sup>  
place for teams U12-U19  
per Division.



# Fees

U8 - U12  
\$350/Team

U14 - U19  
\$375/Team

**Registration Deadline - 5/1/10**

**Early Registration Discount - \$20**  
*when paid-in-full by 4/1/10*

## Roster Size (Maximum)

U8 - U10: 14 players

U12: 16 players

U14 - U19: 22 players

## Guest Players

A maximum of 3 guest players  
allowed per roster.

## Refund Policy

Full refunds will be given if there are not  
enough teams to fill an age/division or the  
tournament is cancelled.

If a team withdraws before April 1, 2010 a  
refund will be given minus \$35.00 for an  
administrative fee.



# Registration

To Register Online for the

# 25<sup>th</sup> Annual Bethlehem



# Soccer Tournament

Presented By **STANNO**

go to: [www.bethlehemsoccerny.org](http://www.bethlehemsoccerny.org)

(Follow the link for 'online registration'  
under the 'tournament menu' tab.)

## Contacts:



**Tournament Registrar:**  
[Bethlehemtourney@gmail.com](mailto:Bethlehemtourney@gmail.com)

**Tournament Coordinator:**  
**Brian Whitman**  
(518) 461-6393  
[soccer@brwhitman.com](mailto:soccer@brwhitman.com)

**Bethlehem Soccer Club**  
450 Wemple Rd, Glenmont NY 12077  
[www.bethlehemsoccerny.org](http://www.bethlehemsoccerny.org)

